

# Inhaltsverzeichnis

- Installation** ..... 3
  - Overview ..... 3
  - Installing SKDS ..... 3
  - Installing Custom Data ..... 3
  - Installing Skype ..... 3
  - Installing CanCard ..... 3
  - Installing SKDS on a removable device like a USB-Stick ..... 4



# Installation

## Overview

SKDS can be used together with different additional drivers and third-party software. Depending on the availability of this additional software, some functions may be disabled. The following table shows which software is needed for which functionality:

Function	SKDS	Custom Data	Skype	CanCard
Compile Script-files	X			
Do diagnostics, View Bus traffic & Telegrams	X			X
Remote Diagnostics Client	X		X	
Remote Diagnostics Server	X		X	X
Read DTCs as clear text message	X	X		
Read and modify the Vehicle Config	X	X		
Library of available module scripts	X	X		

Here are the instructions concerning where to find and how to install the various software:

## Installing SKDS

1. Download the Installer file from [Download SKDS](#).
2. Run the installer
3. Choose the appropriate install directory. If you install SKDS as a normal user (recommended) without being Admin, please choose a folder which you have write access to. After installation you will find the [SKDS content](#) on your Start/Program Menu bar.
4. generate your own encryption key pair as described under [Keymanagement](#)

## Installing Custom Data

If you receive a custom Data archive file (which contains at least the DTC and Vehicle Config data) unpack that archive into your SKDS installation directory to generate a db folder there.

## Installing Skype

Please visit the website [www.skype.com](http://www.skype.com) and follow the instructions there to download, install and set up Skype.

## Installing CanCard

The installation of the CanCard driver is only necessary and sensible if you have a CanCard, CanCase or any other equivalent Vector CAN-Device available.

To install the correct device driver, please visit [www.vector-worldwide.com](http://www.vector-worldwide.com) and download and install

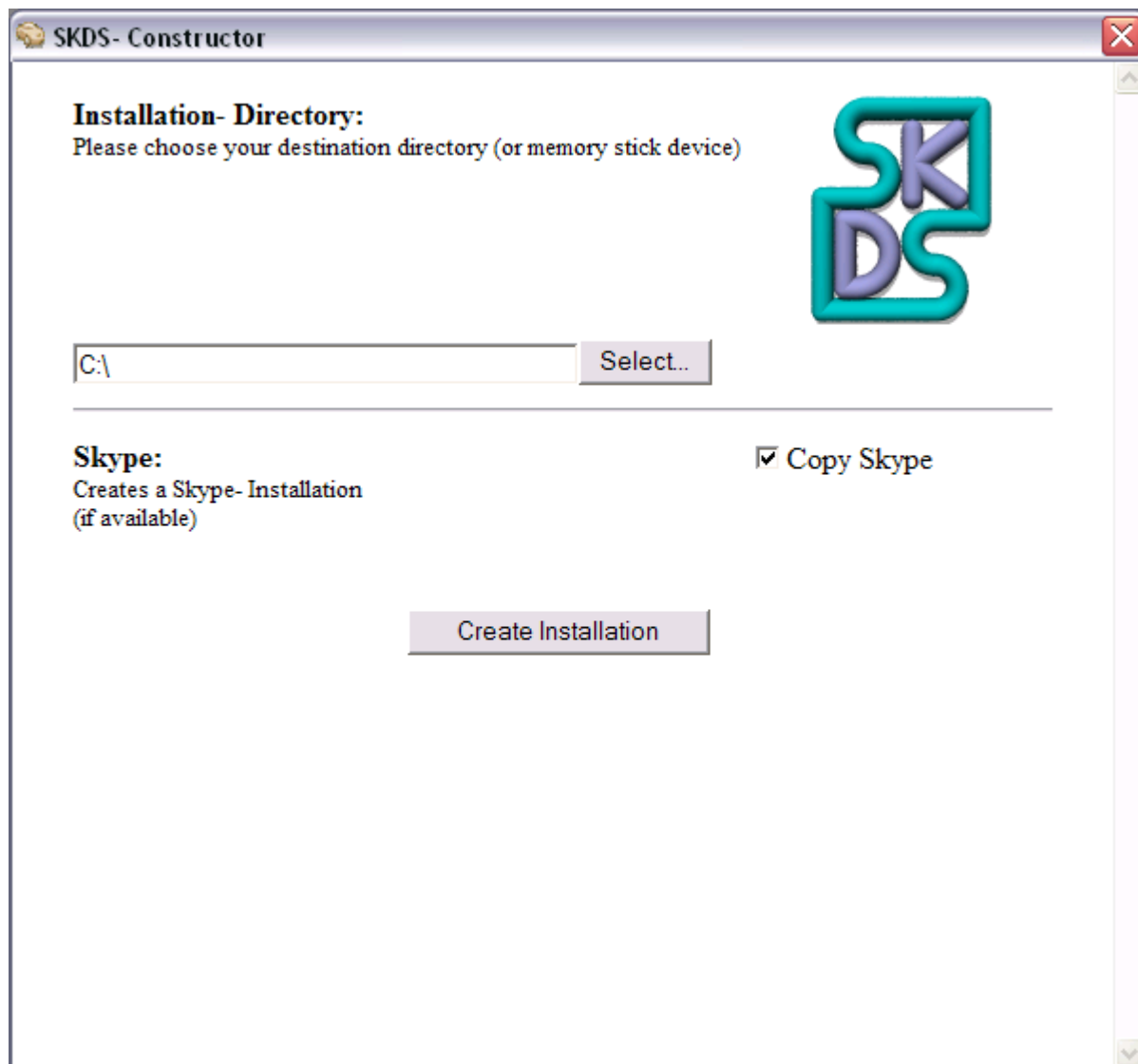
the driver according to your hardware device or use the software which came with your CAN-Device.

## Installing SKDS on a removable device like a USB-Stick

SKDS and Skype are able to run from a removable device like a USB-Stick. In order to have all the necessary files available for copying, the different components need to be installed first as described above. Following this, the programm „Copy SKDS to Stick“ which is part of the SKDS pack, can be used to copy all available and needed files to e.g. a memory stick.

Depending on the availability of Skype, it is possible to select whether these component should also be copied to the stick or not.

Just start „Copy SKDS to Stick“ and select destination directory and components.



From:

<http://www.koehlers.de/wiki/> - **Steffen Köhlers Online- Bastelbuch**

Permanent link:

<http://www.koehlers.de/wiki/doku.php?id=skdsdocu:installation>

Last update: **2011/10/31 18:56**

